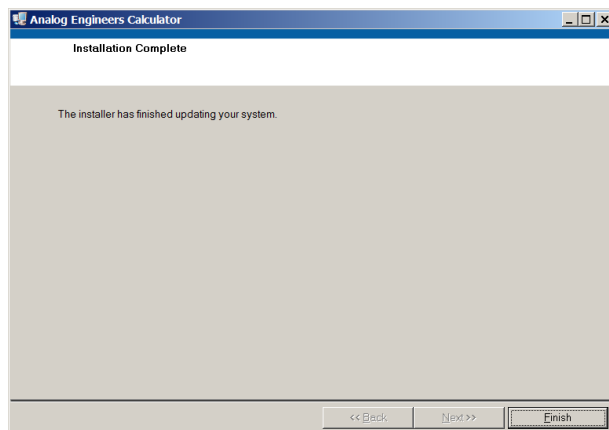
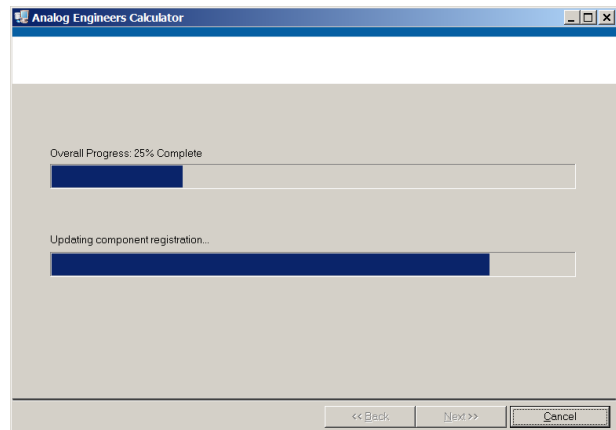
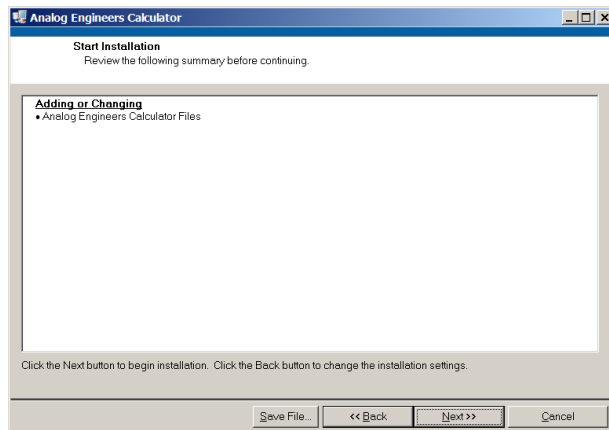
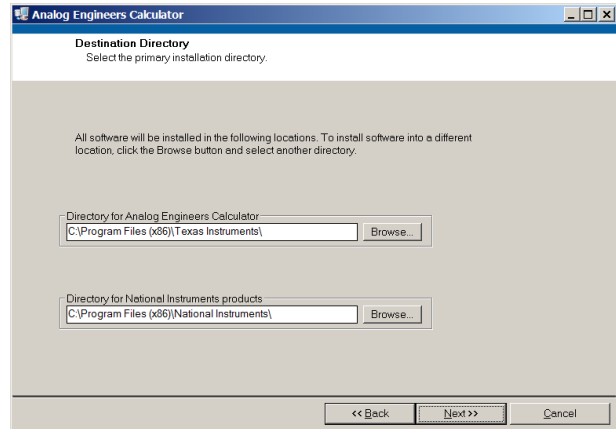
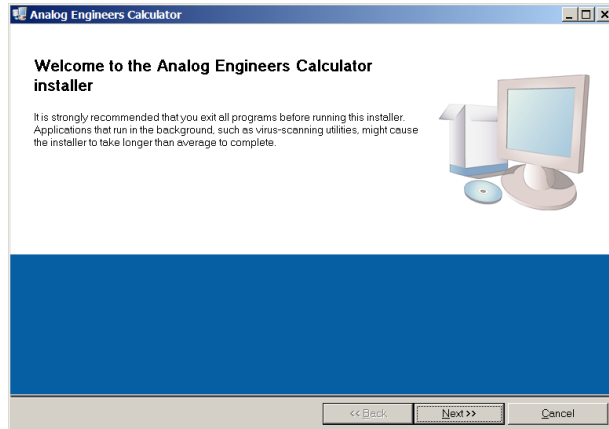


## To install the Analog Engineers Calculator:

In the “Analog Engineers Calculator Installer” folder, click on “setup.exe” and follow the instructions to install the “Analog Engineer’s Calculator”.



## To uninstall old versions:

This calculator will be installed into the “Texas Instruments” folder. Older versions of this software may have a different name or may be installed into a different location. You can remove the older version using Windows “Programs and Features”. Click on the appropriate file to un-install.














### Programs and Features

Control Panel Items ▾ Programs and Features

Uninstall or change a program

To uninstall a program, select it from the list and then click Uninstall, Change, or Repair.

Organize ▾ Uninstall

Name ↕	Publisher	Installed On
 MSP430 Flash Emulation Driver Installer	Texas Instruments	11/8/2016
 MSXML 4.0 SP2 (KB954430)	Microsoft Corporation	8/1/2016
 MSXML 4.0 SP2 (KB973688)	Microsoft Corporation	8/1/2016
 MSXML 4.0 SP2 Parser and SDK	Microsoft Corporation	4/1/2016
 Mumble 1.2.19	Thorvald Natvig	6/14/2017
 National Instruments Software	National Instruments	4/1/2016
 Plabs-SAR-EVM	Texas Instruments Inc.	2/1/2017
 <b>Pocket Reference Calculator</b>	<b>Texas Instruments Inc.</b>	<b>7/14/2017</b>
 Precision Signal Injector	Texas Instruments Inc.	3/31/2017
 PSI Production Test	Texas Instruments Inc.	2/14/2017
 Pulse Secure Host Checker	Pulse Secure, LLC	7/15/2017

